

S V Industries

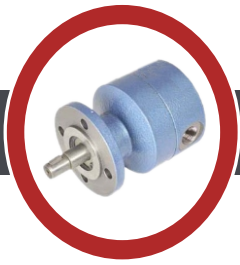
Sure Solution
for **ALL** Viscous Liquid Pumping



SERIES : SUMP

ROTARY GEAR PUMP





MOTOR PUMP ASSEMBLY



Motor pump assembly is used for oil lubrication especially where continuous and high dosage of oil is required. It is also applied under oil circulation systems. It is used almost in all machines where free flow of oil is required. The also applied under oil circulation systems. It is used almost in all machines where free flow of oil is required. The different specification is available with different model. It can suck the oil from 2 ft. downwards and circulate the oil up to 10 ft. Height. The rotation of motor pump assembly is indicated on the label. Four mounting holes are provided to mount the system. An electrical terminal box on the surface of the motor is provided for connection.

Technical Specification



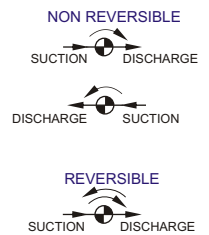
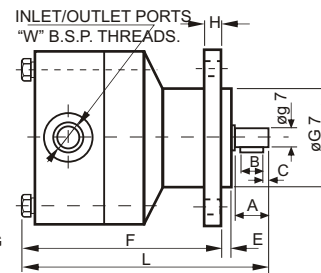
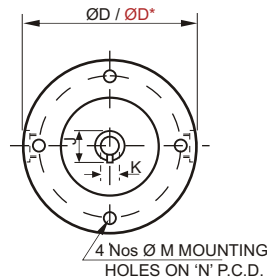
MODELS	Discharge	Max. Pressure	MOTOR Flange Mounted
SVA - 1	1 Litres per minute	15Kg/Cm ²	0.25 HP, 415V. AC1500rpm.
SVA - 3	3 Litres per minute	15Kg/Cm ²	0.25 HP, 415V. AC1500rpm.
SVA - 6	6 Litres per minute	10Kg/Cm ²	0.50 HP, 415V. AC1500rpm.
SVA - 10	10 Litres per minute	10Kg/Cm ²	0.50 HP, 415V. AC1500rpm.

ROTARY PUMPS are gerotor type pumps with positive displacement of oil. On the basis of construction they are of two types, flange type and insert type. Function wise these pumps can be classified into two types non reversible and reversible. Non reversible pumps are rotates only on one direction indicated by an arrow where as the reversible pumps are rotates on either direction, clock-wise and anti-clock-wise.

FLANGE TYPE ROTARY PUMPS (Non Reversible / Reversible)

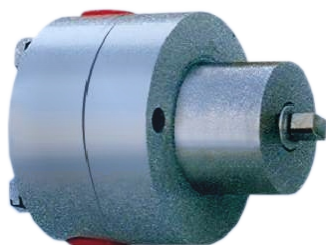


Dimension ' $\varnothing D^*$ ' for reversible pumps



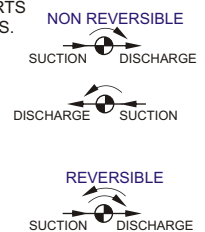
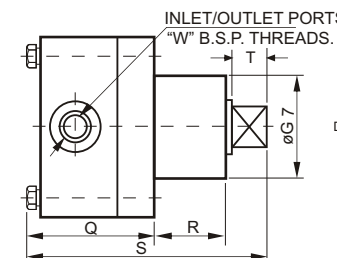
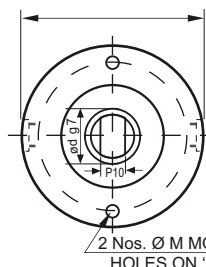
Dimensions in mm

MODEL	Discharge at 1500 RPM	A	B	C	$\varnothing D / \varnothing D^*$	$\varnothing d$	E	F	$\varnothing G$	H	J	K	L	M	N	"W" in BSP
SV-0.5	0.5 LPM	16	12	2	50 / 60	7	2	55	30	5	9	2	71	5	39	1/8
SV-1	1 LPM	22	16	3	60 / 70	10	2	70	35	7	11.5	3	95	6.5	47.5	1/4
SV-3	3 LPM	22	16	3	60 / 70	10	2	75	35	7	11.5	3	100	6.5	47.5	1/4
SV-6	6 LPM	30	18	6	80 / 92	12	3	95	45	10	14	4	130	8.5	65	1/4-3/8
SV-10	10 LPM	30	18	6	80 / 92	12	3	105	45	10	14	4	140	8.5	65	1/4-3/8
SV-16	16 LPM	40	25	7	115 / 135	14	4	120	65	14	16	5	150	9	95	1/2"



Dimension ' $\varnothing D^*$ ' for reversible pumps

INSERT TYPE ROTARY PUMPS (Non Reversible / Reversible)



Dimensions in mm

MODEL	Discharge at 1500 RPM	$\varnothing D / \varnothing D^*$	$\varnothing d$	$\varnothing G$	M	N	P	Q	R	S	T	"W" in BSP
SV-1	1 LPM	60 / 70	10	35	6.5	47.5	6	48	24	83	10	1/4
SV-3	3 LPM	60 / 70	10	35	6.5	47.5	6	53	24	88	10	1/4
SV-6	6 LPM	80 / 92	12	45	8.5	65	7	65	33	103	12	1/4-3/8
SV-10	10 LPM	80 / 92	12	45	8.5	65	7	75	33	122	12	1/4-3/8



SV Industries

Address : 76, Shrinathji Ind. Estate, Kathwada Ring Road, Nr. Visala Estate, Kathwada Circle, Ahmedabad-382 430. INDIA

Email Id : svindustries76@gmail.com
Website : www.svindustries.co

Mobile : +91- 99254 59255
+91- 99092 32555